

Have More Fun Sailing With TenderConnect®!

dinghy transport with


tenderconnect
secure easy to use fast

Take your dinghy piggyback ...



...and make yourself comfortable on the foredeck!



THE NEW AND EASY WAY OF DINGHY TRANSPORTATION

Get to know **TenderConnect**[®] – the **new** and **easy** way of **Dinghy Transportation**

TenderConnect[®] is the new patented system of carrying your dinghy at the stern of a sailing or motor yacht. This is how it works:

Connect your dinghy in a minute:

1 20 sec



Bring your dinghy in position, slightly lift onto the leash and let the dinghy trailer lock into the TenderConnect receiver on the boat stern.

2 40 sec



Pull the dinghy up on the leash thereby lifting the nose until it reaches ...

3 60 sec



... an angle to the boat's rear of about 70-80 degrees. The line is now attached to the backstay and the dinghy is safely stowed.

Even faster - back in the water and ready to use!

1

Release the line and let dinghy back into the water

2

Unhook the receiver

3

Get in and start to paddle!

This process can easily be done by one person in a maximum of 60 - 90 seconds.

6 major advantages of TenderConnect[®] :

1. Extremely fast access to the dinghy in emergency situations
2. Outboard motor can mostly remain on dinghy during transportation
3. Night time theft proof storage and fastening
4. Easy landing of the ship, whilst the dinghy is safely stowed at the back of the yacht
5. Additional wheels for pulling the boat offshore – ideal for mooring buoys
6. No hindrance while sailing – safe even in strong wind and high waves

The system consists of the following components:

1



The **receivers**, 2 stainless steel receivers made of high-alloy stainless material (1.4584) that are mounted at the stern of the yacht.

2



The **cantilever** which is permanently installed at the rear of the dinghy. If necessary additional wheels simplify the transport of the dinghy offshore.

3



The dinghy is hooked into the receiver by locking down the cantilever. This enables the dinghy to be lifted and therefore attaches and safely stores it at the back of the yacht. The attachment is very safe and can not loosen in strong wind and/or high waves.

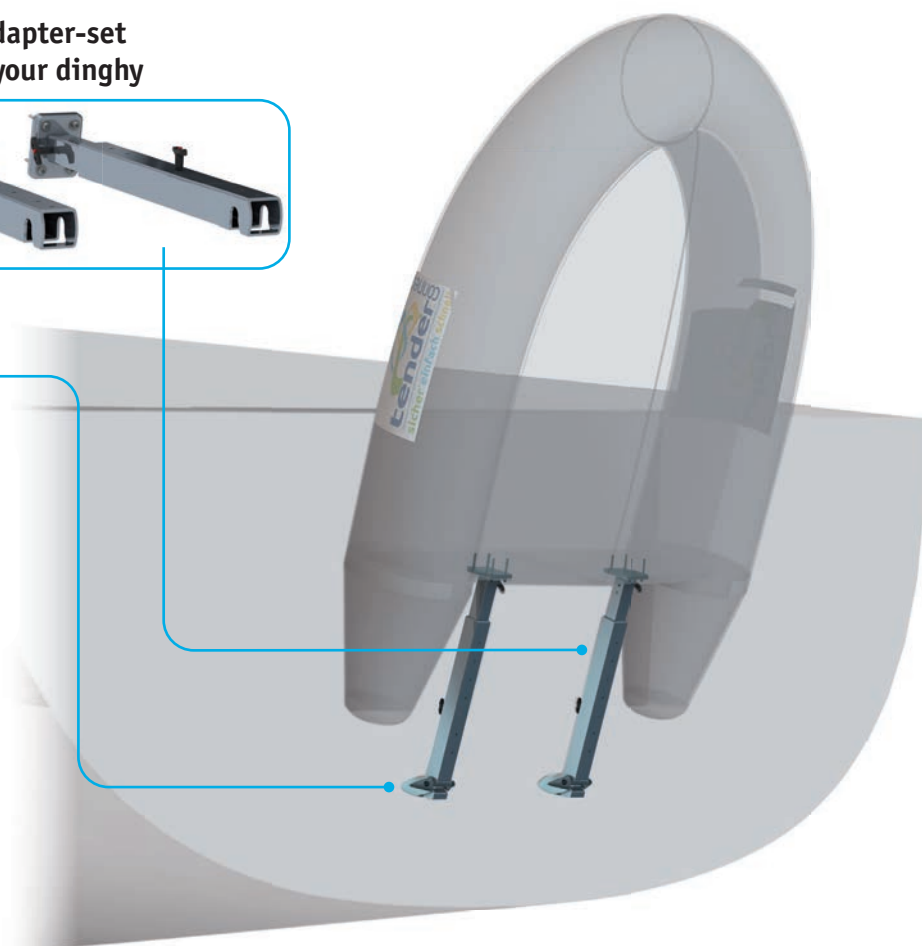
TenderConnect at a glance!

After having installed TenderConnect® you can take your dinghy piggyback in less than 90 seconds. And from now on it is safely stowed when tacking or in case of strong wind. Your foredeck is free for your passengers and you can fully concentrate on your sailing performance.

Cantilever-adapter-set
installed at your dinghy



2 receivers installed at your yacht



Further facts:

Materials: receivers made of acid resistant stainless steel (W.St. 14585, EN10283) cantilever set of anodized aluminium, screws and bolts of stainless steel as well.

Dinghy: the dinghy can be approximately up to 320 cm long (up to 10,5 feet) and can weigh up to 25kg (55 pounds)

Total load: the total load (including outboarder) should not exceed 100 kg (220 pounds)

If you want to check the exact measures - ask for our **drilling templates** for yacht and dinghy (scale 1:1) which we sent you by mail - free of charge - if you let us know your address.

Any questions - contact us: Phone: +49 172 85 63 146

eMail: info@tenderconnect.eu Internet: tenderconnect.eu